

# Transforming our bus network



**We're passionate about getting our transport system right for everyone who lives in, works in or visits Leeds. →**

For more information on all the work Leeds City Council is undertaking as part of the wider Connecting Leeds strategy, please visit [www.leeds.gov.uk/connectingleeds](http://www.leeds.gov.uk/connectingleeds)

**Our vision for Leeds is a world-class city that allows for seamless travel not just within the city but regionally, nationally and internationally.**

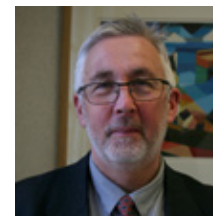
A city that is prosperous, healthy and enjoyable for everyone, however they choose to get around.

The unprecedented transport conversation which began in 2016 told us very clearly what people wanted – a range of meaningful improvements delivered as soon as possible to help make our transport network better along with better public transport as an alternative to a reliance on using cars.

More people using public transport would reduce traffic congestion and air pollution, encouraging people to walk, cycle and generally be more active. So we are now working with our partners on how best to deliver what the people of Leeds told us they want.

The next stage of the conversation is about how we can best redesign key transport routes in the city to allow more effective travel and in particular making our bus network as fast, reliable and efficient as possible.

We want to know your thoughts on what we have in mind, so please read the details in this leaflet and then get involved. Join the conversation and help us make the future of transport in Leeds the best it can be.



**Cllr Richard Lewis**  
Executive Member for Regeneration,  
Transport and Planning, Leeds City Council



Join the conversation  
#ConnectingLeeds

# Continuing the Transport Conversation

In 2016 we started a conversation with the people of Leeds about the future of transport in the city. We had more than 8,000 responses, with a clear message that you want to see improvements to public transport.

You told us what your issues are and what you'd like us to change.

Your views helped us shape the vision for the city's transport strategy, which led to the development of the **Connecting Leeds** vision.

Improving our bus network is an important part of that strategy.

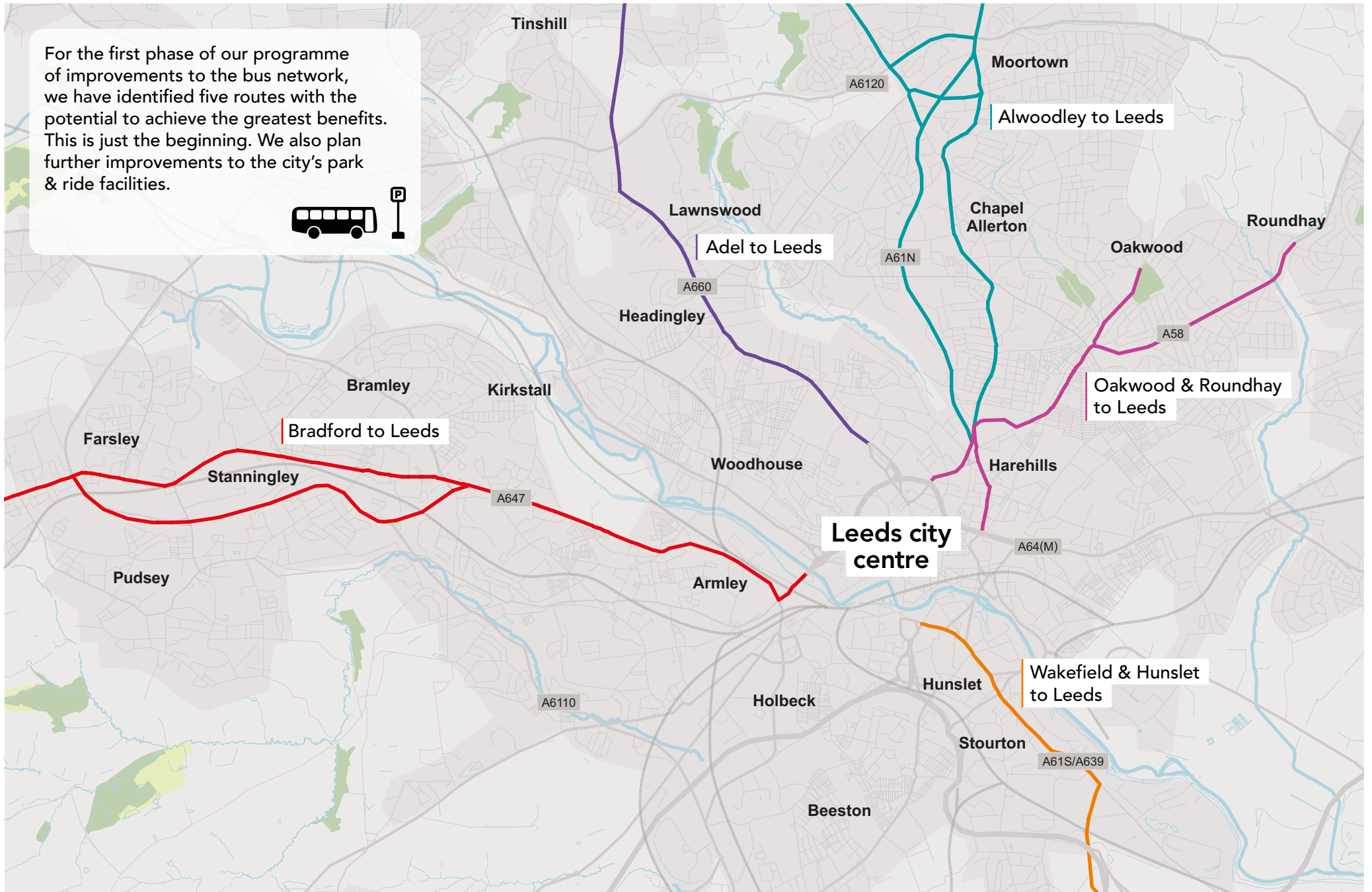
Buses are the most used form of public transport in Leeds.

A third of Leeds households have no car, and 15% of the city's working residents travel to work by bus (compared with less than 5% who use the train). That means buses are a vital link between people and jobs, education, training, shopping and health services.

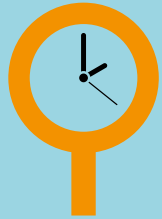
And if we are to reduce congestion and improve air quality we need to increase the number of people choosing to take the bus.

Creating a high quality bus network that will achieve those aims requires significant investment. If we are successful, more passengers will enable operators to invest more in new and better services, ensuring continual improvements that will benefit everyone.

For the first phase of our programme of improvements to the bus network, we have identified five routes with the potential to achieve the greatest benefits. This is just the beginning. We also plan further improvements to the city's park & ride facilities.



# Improving our bus network will mean we can:



Reduce bus journey times and make the services more reliable



Enable more people to benefit from park & ride facilities



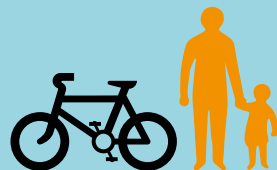
Offer a fleet of new, low emission state-of-the-art buses with WiFi, leather seats and much more



Help people make more productive use of their time



Improve air quality and reduce carbon emissions

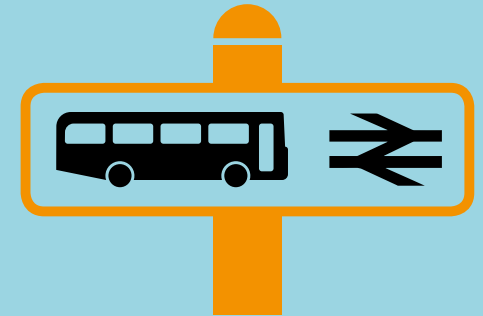


Make the roads safer for cyclists and pedestrians

# Improvements to the city centre will result in:



Better bus stops and waiting facilities, with more information about bus services



Improved connections between bus and rail services



More attractive streets to make the city more prosperous

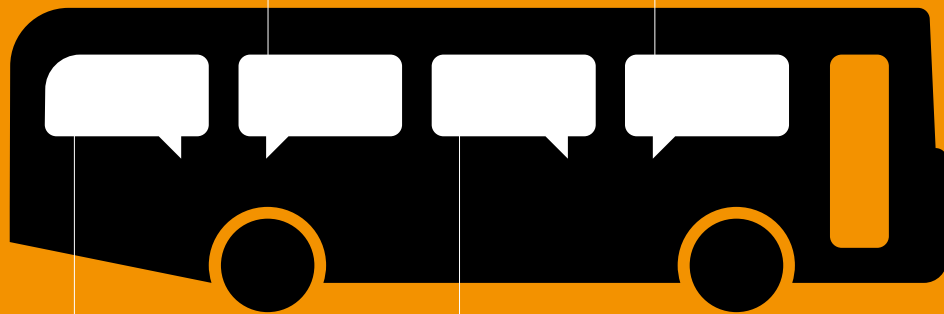


Less congestion, making it easier to get to work, or college

# Get involved in the conversation #ConnectingLeeds

"A bus lane  
would help  
speed up  
journeys"

"It's frustrating when  
buses aren't on time"



"A park & ride  
would be great"

"Cyclists should  
have their own lane"

In March 2018 we're hosting a series of public events to continue our conversation around Connecting Leeds and to discuss plans for three of the key bus routes we've identified.

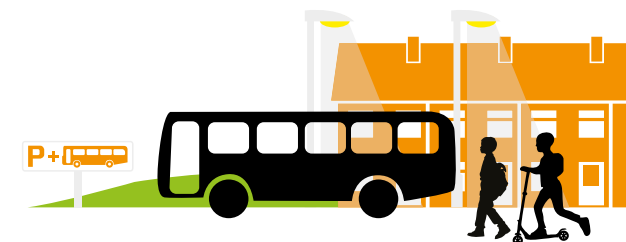
A second phase of events will be held in June 2018 to discuss the Wakefield & Hunslet to Leeds route and the Adel to Leeds via Headingley route, together with the city centre improvements.

We don't just want your feedback on the opportunities we have identified, we also want to hear your thoughts and understand your feelings. What are the key issues to you as a bus user, car user, cyclist, pedestrian, business owner or local resident.

➔ **Details of all the March events** – and how you can give us your opinions – can be found on the back page. We will be releasing details of the June events nearer the time. To find out more about our proposals and have your say, visit [www.leeds.gov.uk/connectingleeds](http://www.leeds.gov.uk/connectingleeds).

If you have any questions, would like to receive more information by post, or would like a large print or braille copy of this leaflet, please contact us.

[connectingleeds@leeds.gov.uk](mailto:connectingleeds@leeds.gov.uk)  
0113 395 6300



---

## We want your views

# Come and join us at any of the following 2018 events

---

Date	Time	Venue
<b>Alwoodley to Leeds</b> <i>via Moortown, Chapel Allerton and Chapeltown</i>		
Tues 6th Mar	5pm-8pm	West Indian Community Centre
Thurs 8th Mar	5pm-8pm	Moortown Baptist Church
Sat 10th Mar	10am-1pm	Reginald Centre, 263 Chapeltown Road

---

<b>Oakwood &amp; Roundhay to Leeds</b> <i>via Harehills, Sheepscar and St James's Hospital</i>		
Mon 12th Mar	5pm-8pm	St Aidan's Church, Roundhay Road
Sat 17th Mar	10am-2pm	Oakwood Church, Springwood Road

---

<b>Bradford to Leeds</b> <i>via Stanningley, Bramley and Armley</i>		
Mon 19th Mar	5pm-8pm	Armley Leisure Centre
Wed 21st Mar	5pm-8pm	Bramley Community Centre
Sat 24th Mar	11am-2pm	St James Parish Hall, Galloway Lane (Pudsey)

---

Details of our June events on the Wakefield & Hunslet to Leeds route and the Adel to Leeds via Headingley route, together with our events on the city centre, will be released nearer the time.